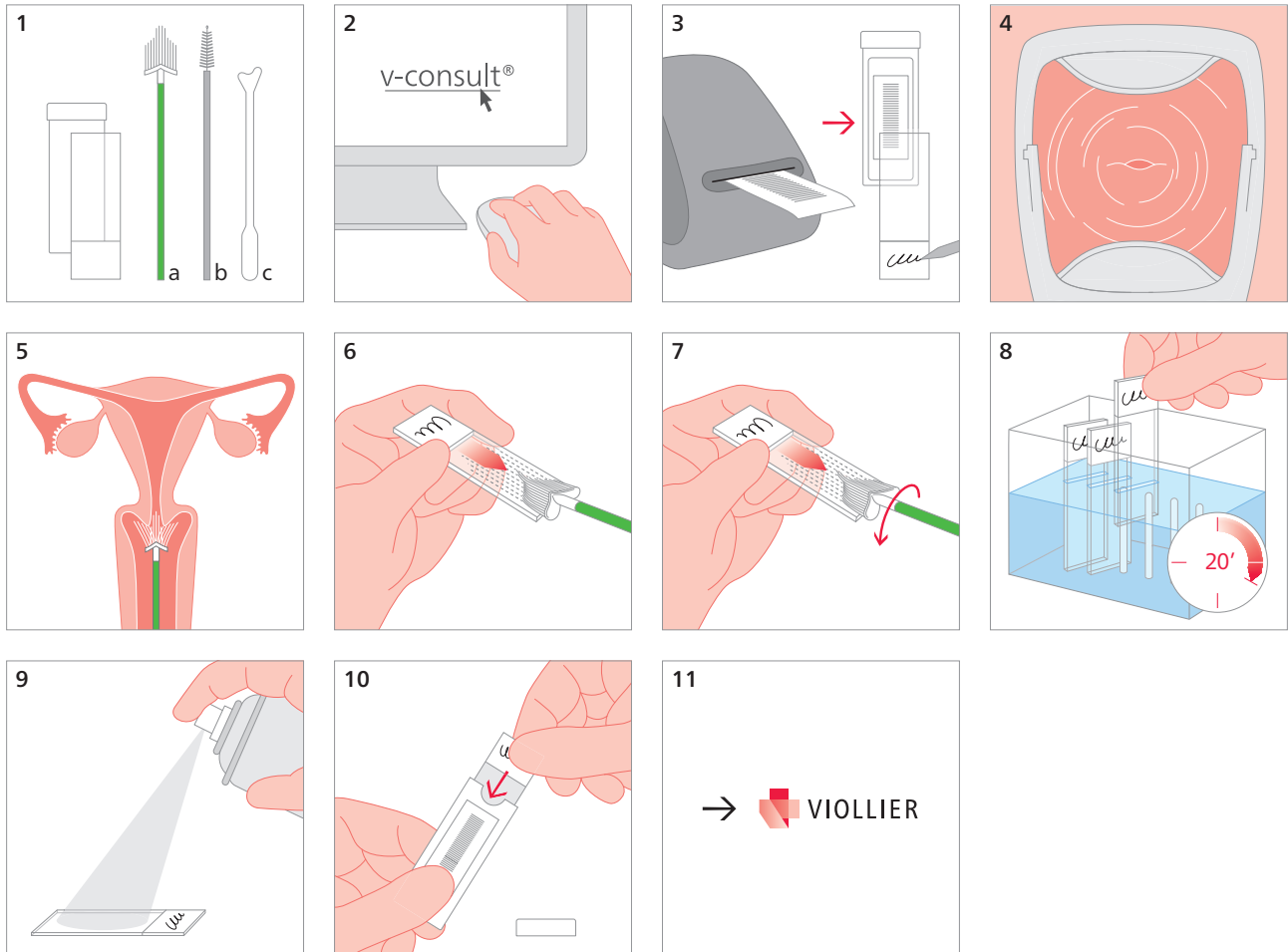


## Swab – gynecological cytology: conventional method

Slide in sleeve, white (30) various kits for sampling



2 Note details of the patient and her medical history in v-consult®

4 Position cervix uteri. Gently remove covering secretions

5 Material sample:

a Using **Cervex-Brush®** oder **Cervibrush® Plus**

Apply gentle pressure in direction of cervix, until lateral bristles are pushed to the ectocervix

Maintain gentle pressure while turning clockwise 5 times

b / c Using **Cytobrush® Plus GT / Plastic spatula**

Introduce into cervical canal, until only the last bristles are visible

Slowly perform  $\frac{1}{4}$  or  $\frac{1}{2}$  turn. Do not overturn

6 – 7 Apply cell material onto the slide: first smear one side of the brush over the slide then the other side.

Avoid circular motions

8 – 9 Immediately fix in isopropanol 99% for at least 20 min or fix with a fine coat of fixing spray

10 Insert the **dry** preparation into the sleeve

Shipping material:

Please label with name, first names and date of birth of the patient