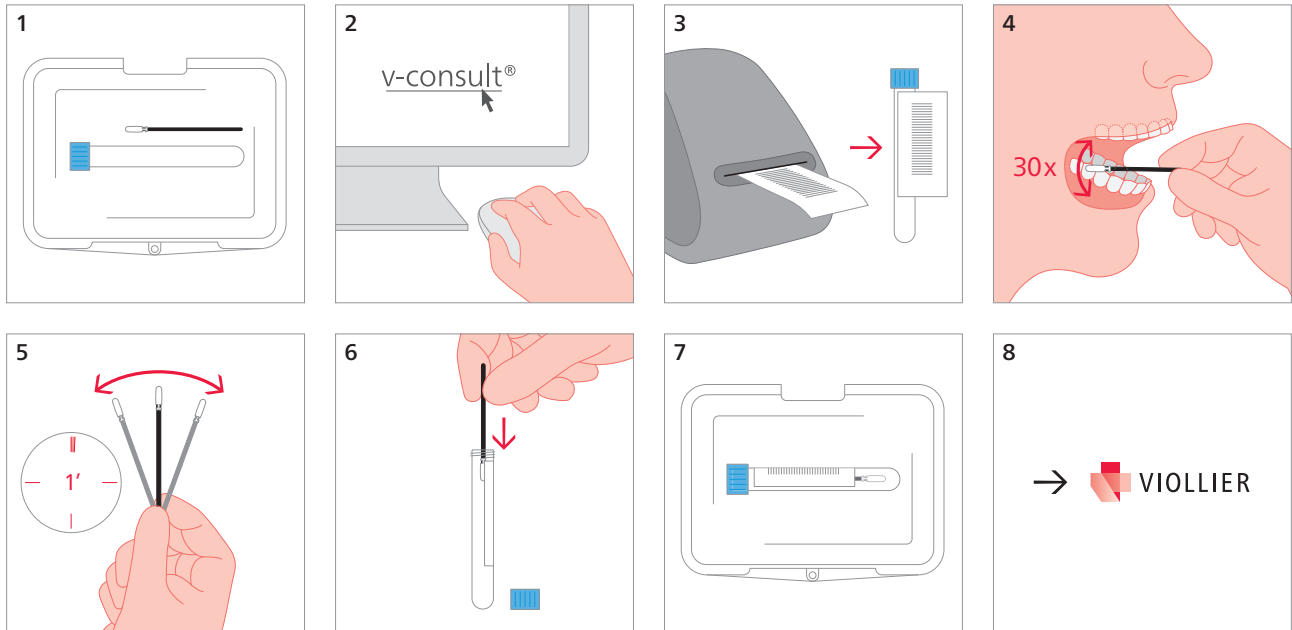


## Swab – buccal mucosa (human genetics)

Swab kit buccal mucosa (71)



- 
- 4 Stroke at least 30 x vigorously over the inner surface of the cheek

---

  - 5 Fan the swab in the air for 1 min

---

  - 7 Store sample at room temperature prior to transport

---

Genetic predispositions, e.g. lactose intolerance

Shipping material:  
Please label with name, first names and date of birth of the patient