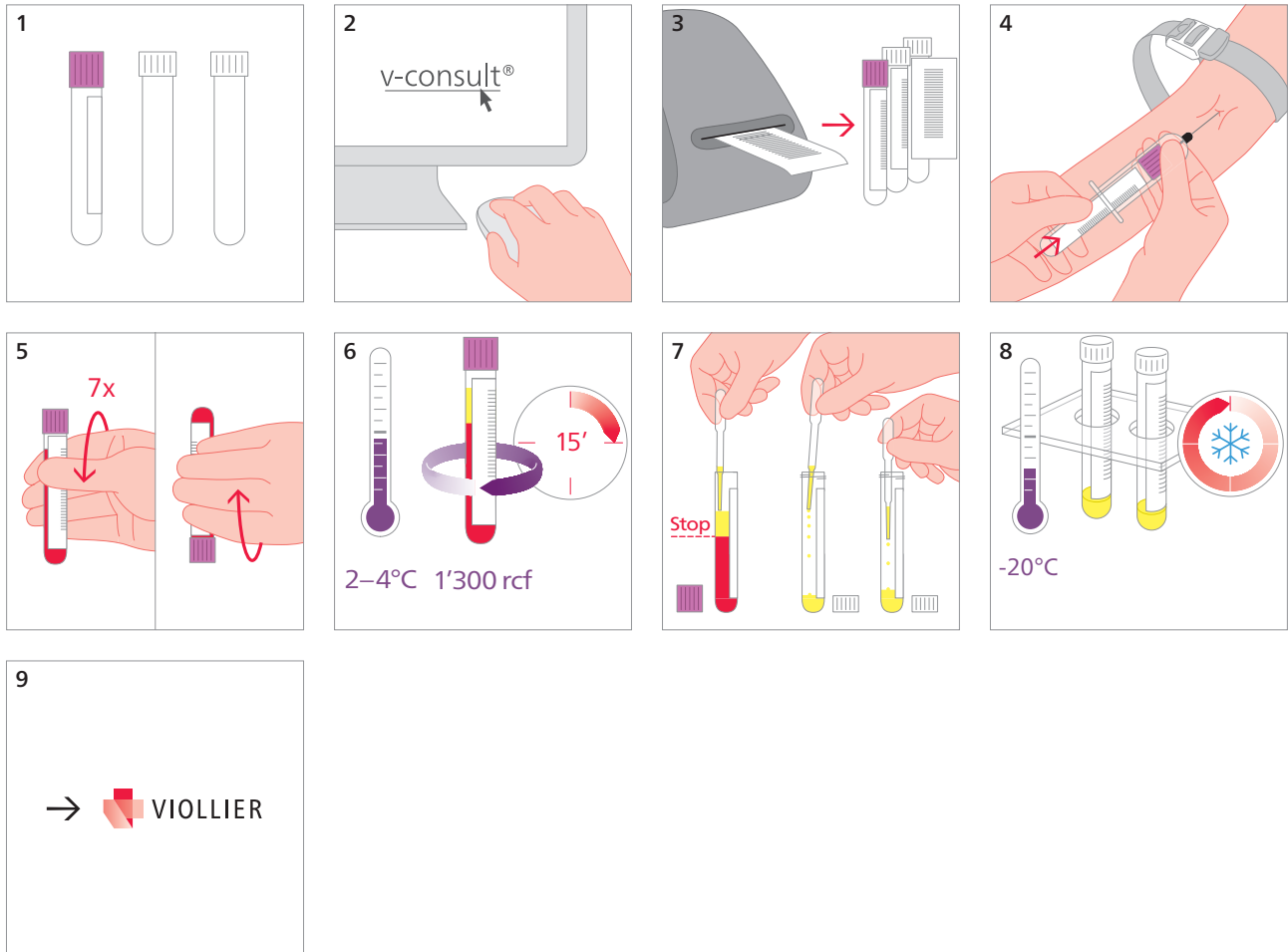


Blood sample – cryo instructions

Serum / plasma tube, white, 7 mL (90)



- 1 According to the analysis use EDTA-tube, purple (6) or serum gel tube, golden (1)
- 4 Blood sampling is carried out between **08:00 – 10:00 h**
- 8 Freeze decanted plasma or serum in the freezer in an upright position
- 9 Transport by agreement at -20°C / -70°C

Shipping material:

Please label with name, first names and date of birth of the patient