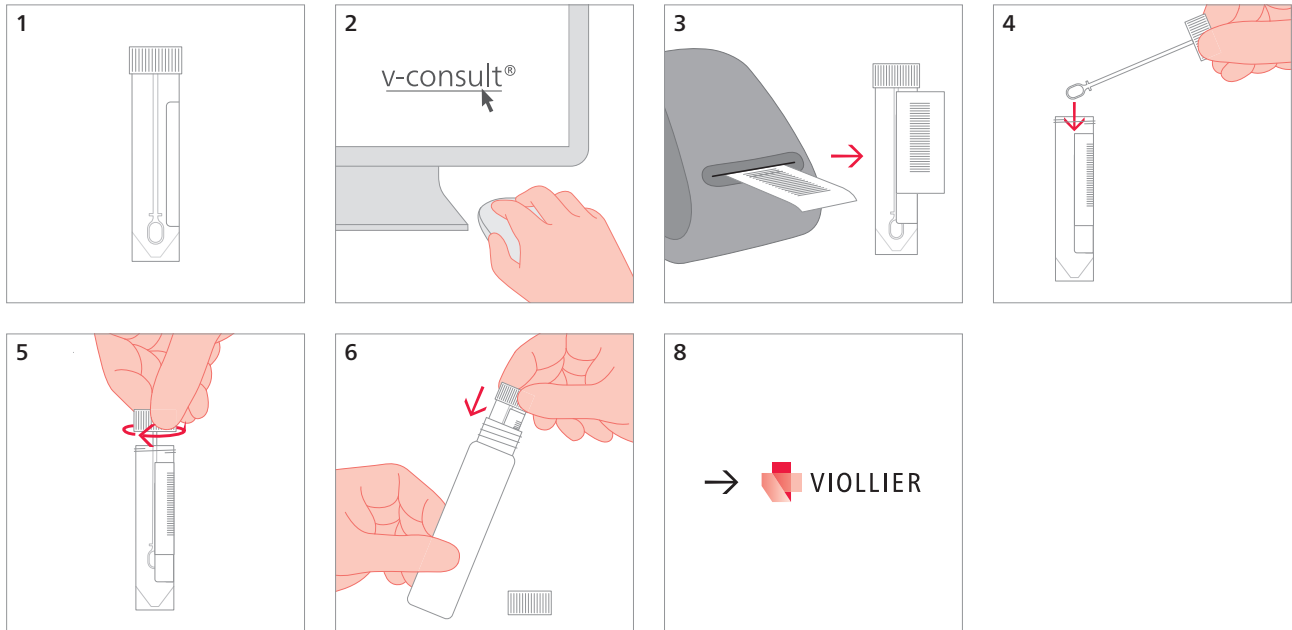


Secretions – respiratory tract

Tube, white (32)



Sputum, bronchial secretion: 4 mL

- General bacteriology
- Eosinophilic granulocytes
- Mycobacteria: at least 5 mL morning sputum on three consecutive days or at a one day interval
- Fungi
- *Pneumocystis jirovecii*: only in BAL or induced sputum

Shipping material:

Please label with name, first names and date of birth of the patient