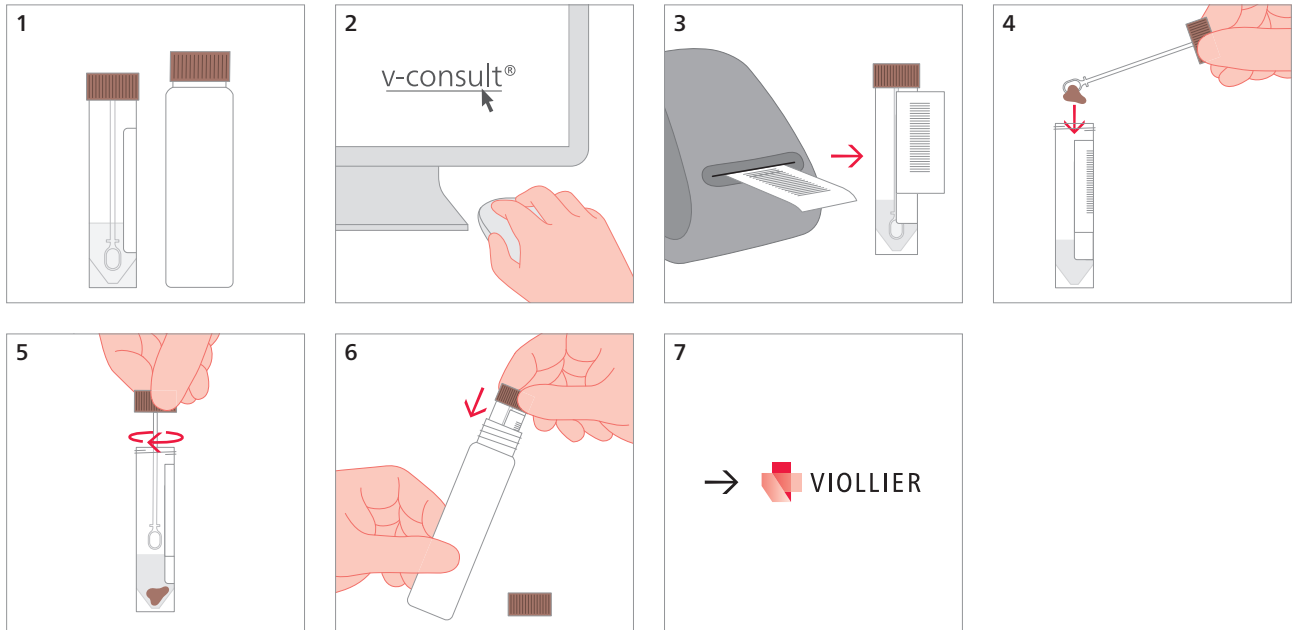


Feces – microbiology (Cary-Blair)

Cary-Blair tube, brown (33)



4 2 g feces

Pathogen	Antigen / Toxin	Single PCR	Culture	Multiplex-PCR
Viruses				
Adenovirus				×
Norovirus		×		×
Rotavirus				×
Bacteria + Yeasts				
<i>Campylobacter</i> spp., <i>Salmonella</i> spp., <i>Shigella</i> spp.			×	×
<i>Aeromonas</i> spp., <i>Plesiomonas</i> spp., <i>Vibrio</i> spp. (except of <i>V. cholerae</i>), <i>Yersinia</i> spp.			×	
Yeasts			×	
Bacterial toxins				
<i>Clostridium difficile</i>	GHD and Toxins A + B	×		×
<i>Escherichia coli</i> EHEC	Verotoxins 1 + 2			×
Parasites				
<i>Entamoeba histolytica</i>				×
<i>Giardia lamblia</i>	×			×
Cryptosporidia				×

Shipping material:

Please label with name, first names and date of birth of the patient