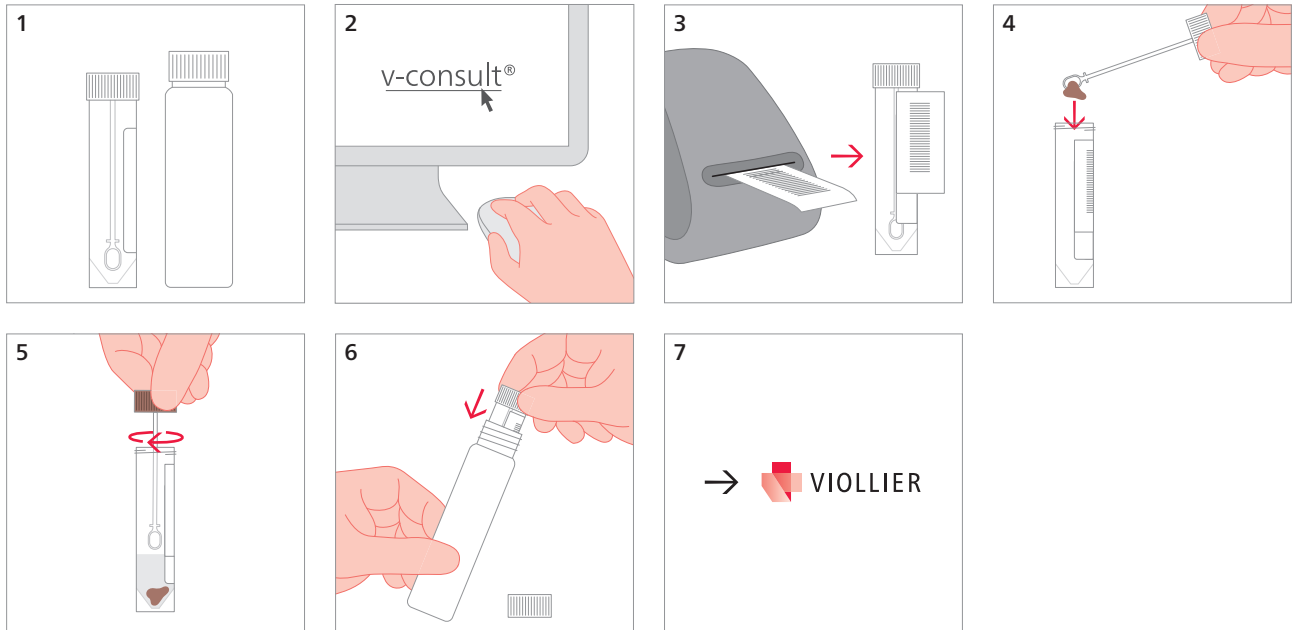


## Feces – microbiology / chemistry (native)

Tube, white (32)



4 2 g feces

### Chemistry:

- Calprotectin
- Occult blood
- Pancreas elastase

Pathogen	Antigen	Single PCR	Culture	Microscopy
<b>Viruses</b>				
Adenovirus	×			
Norovirus		×		
Rotavirus	×			
<b>Bacteria + Yeasts</b>				
<i>Helicobacter pylori</i>	×			
Mycobacteria			×	
Yeasts			×	
<b>Bacterial toxins</b>				
<i>Clostridium difficile</i>	GHD and Toxins A + B	×		
<i>Escherichia coli</i> EHEC	Verotoxins 1 + 2			
<b>Parasites</b>				
<i>Entamoeba histolytica</i>	×			
<i>Giardia lamblia</i>	×			
<i>Strongyloides stercoralis</i> (15 g feces)			×	×

Shipping material:

Please label with name, first names and date of birth of the patient