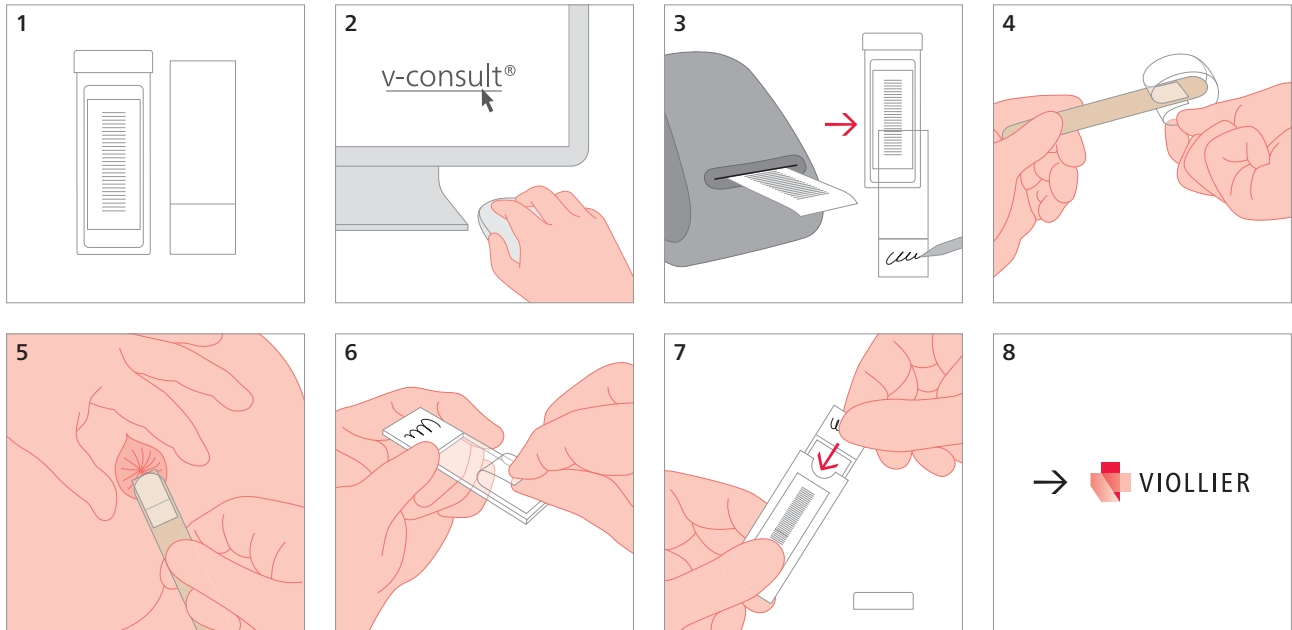


## Feces – parasites: *Oxyuris (Enterobius vermicularis)*

Transparent adhesive tape with glass slide



### Sampling before first defecation in the morning

- 4 Stick a piece of a perfectly transparent adhesive tape with the sticky side outwards in a U-shape around a tongue spatula
- 5 Spread nates of the patient and dab anal fold with the adhesive tape
- 6 Apply adhesive tape to glass slide

Shipping material:

Please label with name, first names and date of birth of the patient