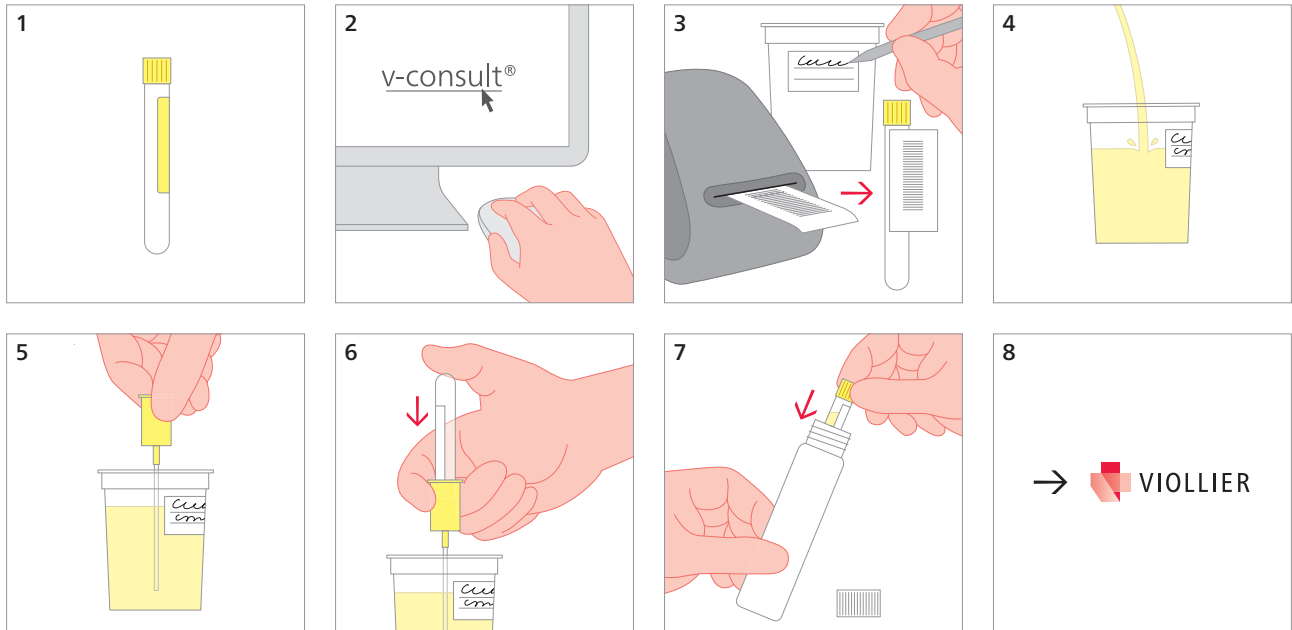


Urine – pathogen detection: antigens and PCR

Spot-urine tube without preservatives (52)



PCR

- *Chlamydia trachomatis*
- *Neisseria gonorrhoeae*
- *Mycoplasma genitalium*
- *Mycoplasma hominis*
- *Ureaplasma urealyticum*
- *Trichomonas vaginalis*

First catch from the 1st morning urine or after at least 2 hours without urinating
5 – 10 mL

Antigen detections

- Legionella and pneumococcal
Spontaneous urine
5 – 10 mL

Mycobacteria

- At least 6 × spot-urine tube
Send in 50 – 100 mL morning urine on three consecutive days or with an interval,
no collection urine

Parasites

- *Schistosoma haematobium*:
Shipping material upon request
Urine sample between 12:00 h and 15:00 h, after slight physical activity if possible

Shipping material:

Please label with name, first names and date of birth of the patient