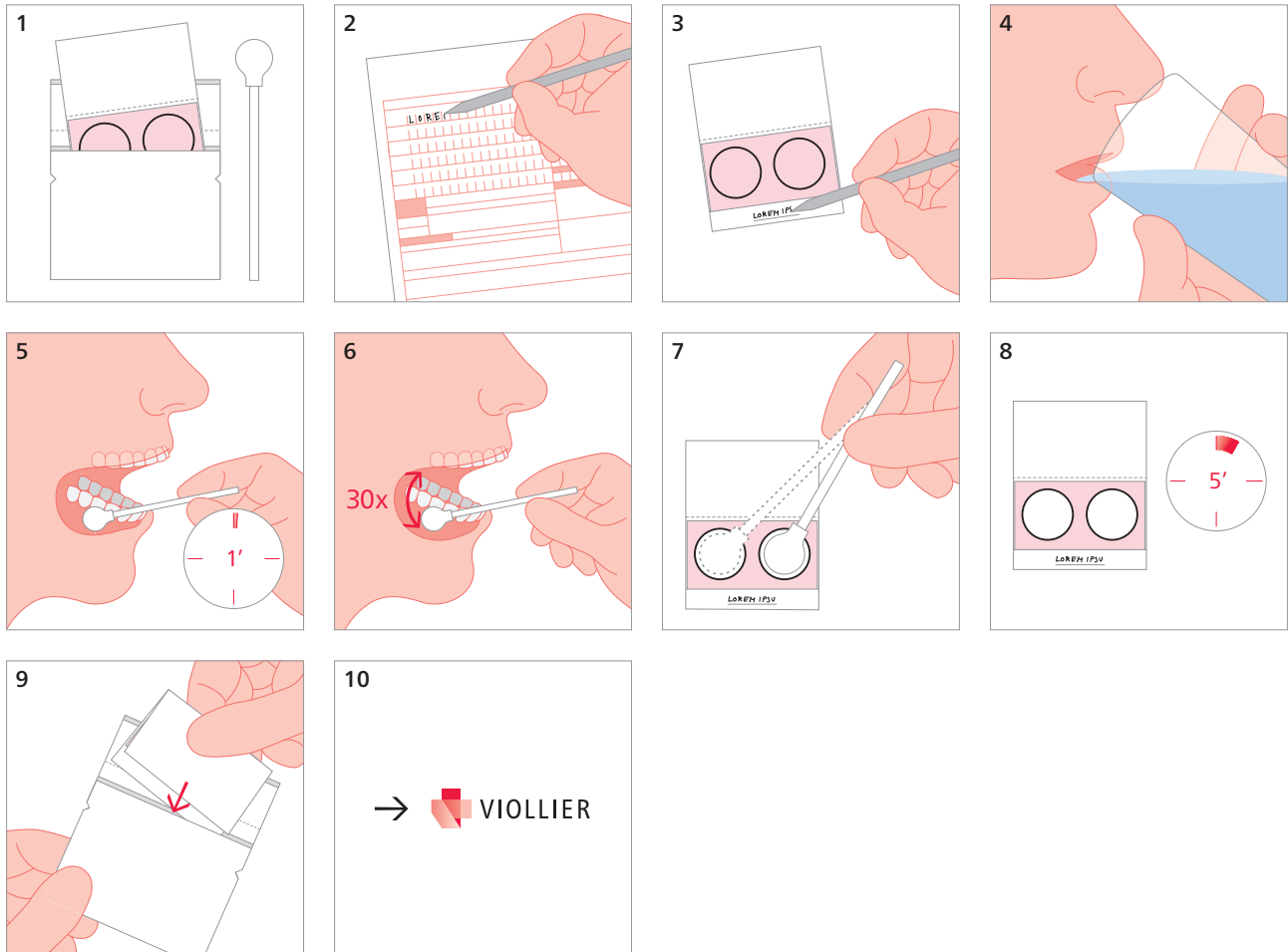


## Swab – genetic pedigree

Kit Genetic pedigree (47)



- 1 Risk of contamination with foreign DNA:  
Please handle cotton swab and removal paper sterile

---

- 3 **One sample envelope per person**  
Label sample envelope and open it

---

- 4 Just before sampling, rinse mouth with tap water

---

- 5 Place the foam rubber end of the sampling swab between teeth and cheek, let it saturate with saliva and **wait for 1 min**

---

- 6 Then stroke at least **30 x vigorously** over the inner surface of the cheek

---

- 7 With the saliva-saturated end of the foam rubber, stamp on the pink areas of the sample envelope, so that they are drenched and change color to white

---

- 8 Air dry the sample envelope for 5 minutes, then pack it in the plastic bag for shipping

---

According to the Ordinance on the Creation of DNA profiles in the Civil and Administrative Sector of 14.02.2007 (VDZV, SR810.122.2) Article 12, paragraph 3, the person to be examined shall be photographed during the sampling. The photograph is to be signed by the person or its legal representative.

To ensure the processing of the order, please enclose the photo together with the order.

Shipping material:

Please label with name, first names and date of birth of the patient