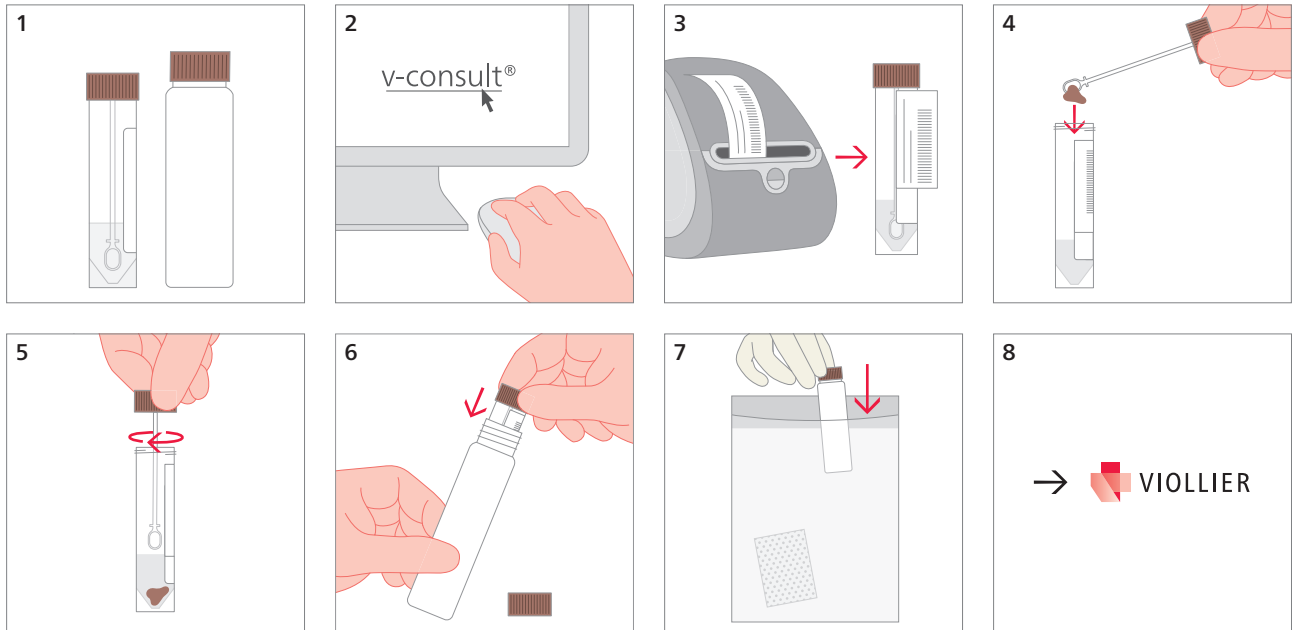


## Feces – microbiology (Cary-Blair)

Cary-Blair tube, brown (33)



4 2 g feces

Pathogen	Antigen / Toxin	Single PCR	Culture	PCR Multiplex
<b>Viruses</b>				
Adenoviruses				×
Noroviruses		×		×
Rotaviruses				×
<b>Bacteria + Yeasts</b>				
<i>Campylobacter</i> spp., <i>Salmonella</i> spp., <i>Shigella</i> spp.			× <sup>1</sup>	×
<i>Aeromonas</i> spp., <i>Plesiomonas</i> spp., <i>Vibrio</i> spp. (except of <i>V. cholerae</i> ), <i>Yersinia</i> spp.			×	
Yeasts			×	
<b>Bacterial toxins</b>				
<i>Clostridium difficile</i>	GHD and Toxine A + B	×		×
<i>Escherichia coli</i> EHEC				×
<b>Parasites</b>				
<i>Entamoeba histolytica</i>				×
<i>Giardia lamblia</i>				×
Cryptosporidia				×

<sup>1</sup>Only in the case of a single pathogen detection in the course of a control examination

Shipping material:

Please label with name, first names and date of birth of the patient