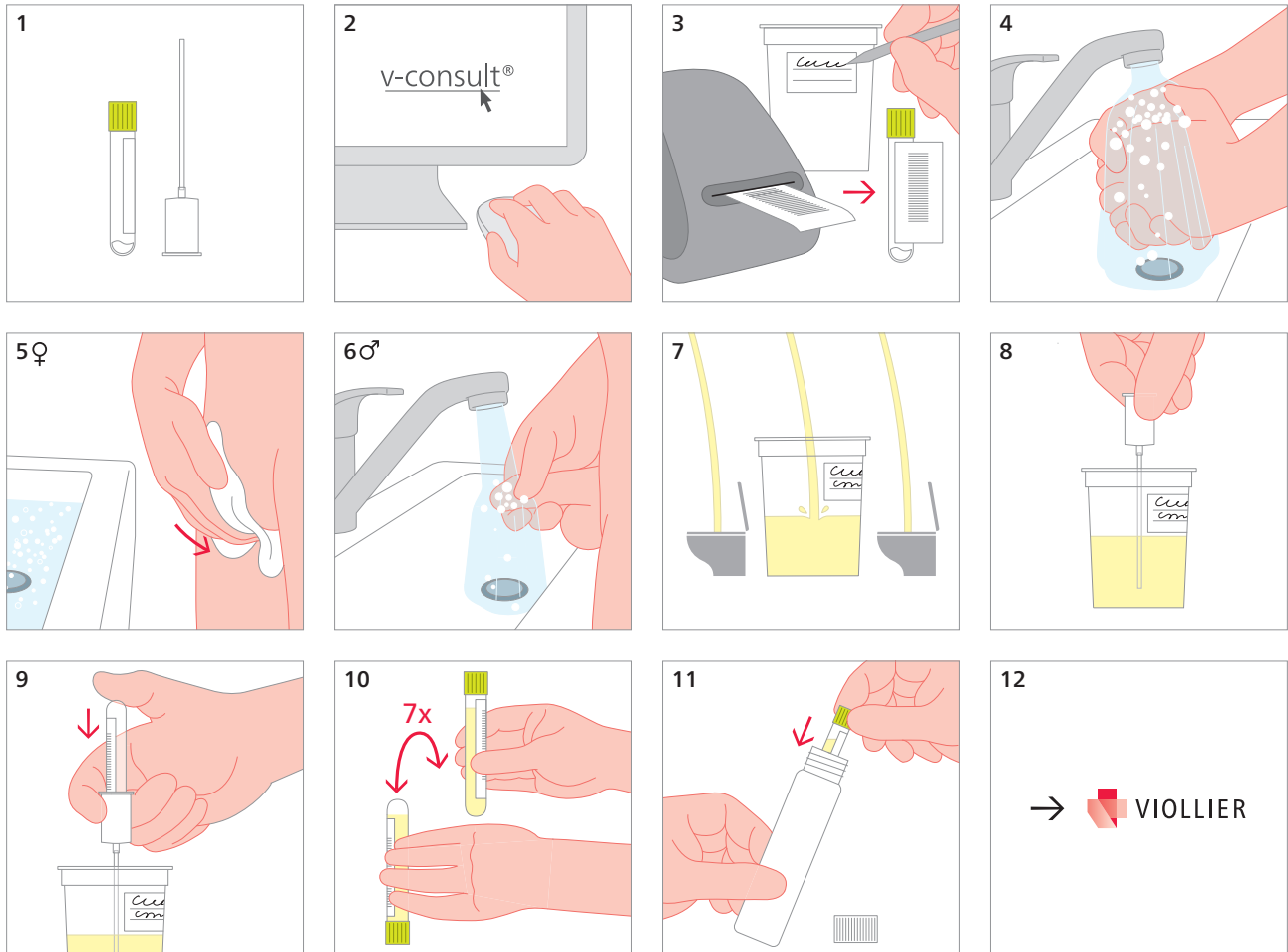


Urine – bacteria and yeasts, collection of clean-catch urine

Bacturine tube, light green (40)



4 Wash hands

5 – 6 ♀ : wash vagina entry from front to back with soap and water
♂: retract the foreskin and wash with soap and water

7 First void small urine volume into toilet, then half fill the urine collecting container, void remaining urine into toilet

Urine: 5 mL

- General bacteriology
- Yeasts

Suitable for bacterial count, culture, and differentiation as well as susceptibility testing

Not suitable for urine status, chemistry analyses and molecular biological analyses (PCR)

Shipping material:

Please label with name, first names and date of birth of the patient