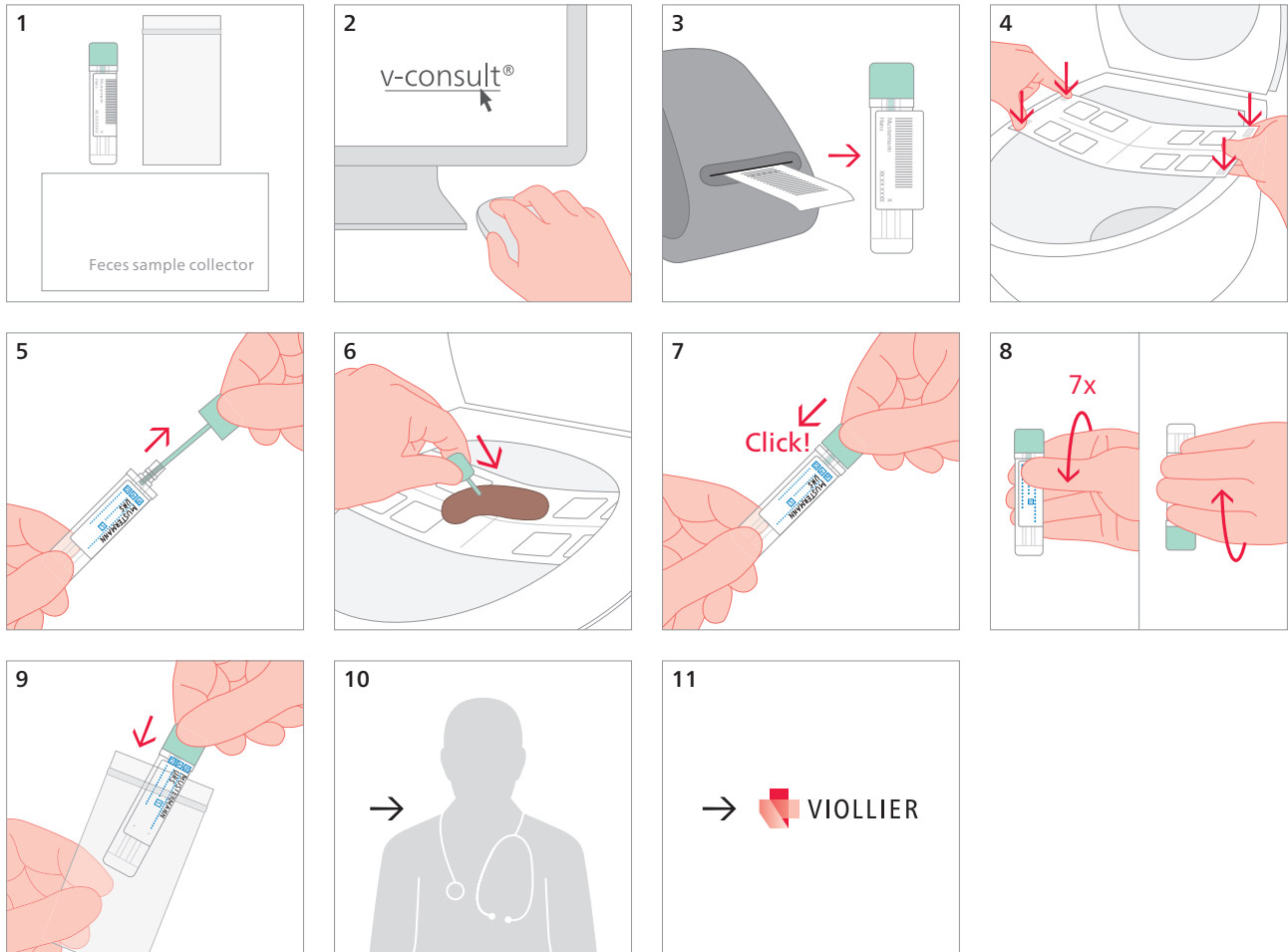


Early detection of bowel cancer

Occult blood tube (69)



4 Attach the feces sample collector as an aid to catch material

6 Pass the tip of the sampling rod over different areas of the feces sample until the grooves are completely filled

7 – 8 Close the tube tightly and shake it vigorously 7 times

9 – 10 Close the clear bag tightly and **drop it off at your doctor's office**

Shipping material:

Please label with surname, name, date of birth of the patient, and date of sampling